

# C14 Two-Piece Weldable Coupler, 18 mm

## KATALOGNUMMER

**EL18C14N**



nVent LENTON C14 Two-Piece Weldable Couplers provide a quick and easy solution for connecting reinforcing steel bar (rebar) perpendicular to structural steel sections or plates. The coupler is internally taper threaded on one end with the other end or exterior surface prepared for welding. The C14 Two-Piece weldable coupler materials have been optimized to facilitate simple welding processes. Typically, the coupler and mating steel sections will not require pre- or post-heating to aid in the welding process.

## CERTIFICERINGER



## FUNKTIONER

Machined from weldable grades of steel

J-groove chamfer reduces required weld area

Easy to weld

## PRODUKTEGENSKABER

Rebar Size, Metric: 18 mm

Diameter 1 (Ø1): 40 mm

Diameter 2 (Ø2): 40 mm

Diameter 3 (Ø3): 29mm

Length (L): 87mm

Bar Depth (BD): 29mm

Unit Weight: 0.72 kg

Designed to Meet: AASHTO; ABNT NBR 8548:1984; ACI 318 Type 1 (125% Specified Yield); ACI 318 Type 2 (Specified Tensile); ACI 349; ACI 359; AS3600

## YDERLIGERE PRODUKTOPLYSNINGER

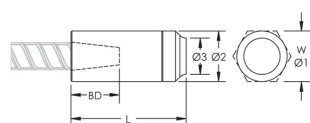
---

Bar dimensions and weights listed may vary by region. Coupler sizes not shown may be available by special order. Contact your nVent LENTON representative for more information.

The design of the weld, the selection of electrode, and other relevant choices depend on the chemical and physical properties of the structural steel to which the couplers are welded. Engineers who design assemblies should adhere to all appropriate regulations.

## DIAGRAMS

---



## ADVARSEL

---

nVent-produkter skal kun installeres og anvendes som angivet i nVents produktvejledninger og træningsmaterialer. Vejledninger er tilgængelige på [www.nvent.com](http://www.nvent.com) og hos din nVent kundeservicerepræsentant. Forkert installation, misbrug, fejlanvendelse eller anden undladelse af fuldt ud at følge nVents instruktioner og advarsler kan medføre funktionsfejl, materielle skader, alvorlige personskader eller død og/eller ugyldiggøre din garanti.

### North America

+1.800.753.9221

Option 1 – Customer Care

Option 2 – Technical

Support

### Europe

Netherlands:

+31 800-0200135

France:

+33 800 901 793

### Europe

Germany:

800 1890272

Other Countries:

+31 13 5835404

### APAC

Shanghai:

+ 86 21 2412 1618/19

Sydney:

+61 2 9751 8500



Vores kraftfulde portefølje af mærker:

**CADDY**

**ERICO**

**HOFFMAN**

**ILSCO**

**SCHROFF**

**TRACHTE**