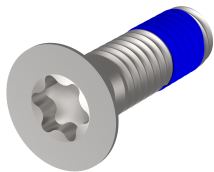


Assembly Parts for Rugged Components, Screw, Countersunk, Torx, with Thread-locking Compound, M4 x 14

KATALOGNUMMER

24566-101

Assembly parts with thread-locking compound for rugged Side Panel, horizontal rail, cover plates, rear angle.



CERTIFICERINGER



FUNKTIONER

Screws for the following fixings: Rugged side panel - horizontal rail, Rugged side panel - cover plate, Rugged side panel - rear angle

PRODUKTEGENSKABER

Type: Countersunk Screw

Length: 14mm

Pakke mængde: 100

Thread Size: M4

Materiale: Stainless Steel

Produktfamilie: EuropacPRO

Product Type: Assembly Kit

Works With: Subracks

Net Weight: 0.128kg

ADVARSEL

nVent-produkter skal kun installeres og anvendes som angivet i nVents produktvejledninger og træningsmaterialer. Vejledninger er tilgængelige på www.nvent.com og hos din nVent kundeservicerepræsentant. Forkert installation, misbrug, fejlanvendelse eller anden unkladelse af fuldt ud at følge nVents instruktioner og advarsler kan medføre funktionsfejl, materielle skader, alvorlige personskader eller død og/eller ugyldiggøre din garanti.

North America

All locations
+1.763.422.2661
Chat with us:
nvent.com/schroff

Europe

Straubenhardt, Germany
+49.7082.794.0
Betschdorf, France
+33.3.88.90.64.90
Warsaw, Poland
+48.22.209.98.35
Assago, Italy
+39.02.932.7141
Chat with us:
nvent.com/schroff

Asia

Shanghai, China
+86.21.2412.6943
Qingdao, China
+86.532.8771.6101
Singapore
+65.6768.5800
Shin-Yokohama, Japan
+81.45.476.0271
Chat with us:
nvent.com/schroff

Middle East & India

Dubai, United Arab
Emirates
+971.4.378.1700
Bangalore, India
+91.80.6715.2001
Istanbul, Turkey
+90.216.250.7374
Chat with us:
nvent.com/schroff



Vores kraftfulde portefølje af mærker:

CADDY ERICO HOFFMAN ILSCO SCHROFF TRACHTE