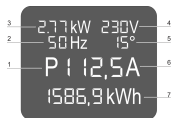
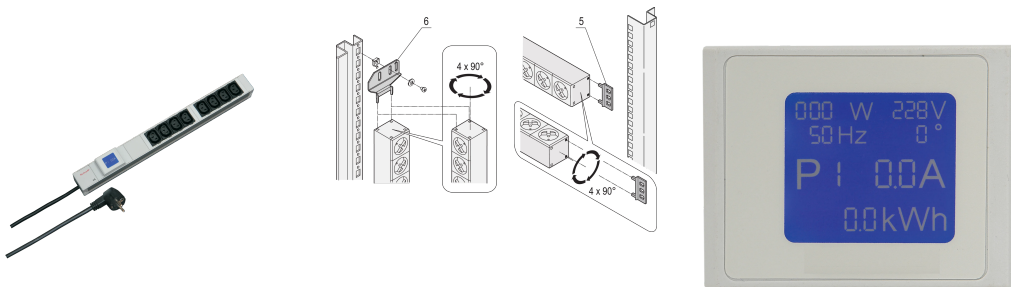


Socket Strip, IEC C13, Metered

KATALOGNUMMER

60110-296



PDU with local power meter. Relevant Power data are shown on an integrated display.

CERTIFICERINGER



FUNKTIONER

Socket strips can be rotated through all four directions (in 90° increments) during installation

Mounting height 1 U

Integrated measurement and display via local display unit

Socket strips with IEC 60320-C13 sockets

Horizontal and vertical mounting

PRODUKTEGENSKABER

Product Type: Socket Strip

Stiktype: IEC C13

Socket Quantity: 8

Farve: Grey

Switched Outlets: Yes

Length: 438.5mm

Spænding AC: 230V

Dybde: 44mm

Materiale: Aluminium; Polyamide

Net Weight: 0.906kg

Pakke mængde: 1

ADVARSEL

nVent-produkter skal kun installeres og anvendes som angivet i nVents produktvejledninger og træningsmaterialer. Vejledninger er tilgængelige på www.nvent.com og hos din nVent kundeservicerepræsentant. Forkert installation, misbrug, fejlanvendelse eller anden unkladelse af fuldt ud at følge nVents instruktioner og advarsler kan medføre funktionsfejl, materielle skader, alvorlige personskader eller død og/eller ugyldiggøre din garanti.

North America

All locations
+1.763.422.2661
Chat with us:
nvent.com/schroff

Europe

Straubenhardt, Germany
+49.7082.794.0
Betschdorf, France
+33.3.88.90.64.90
Warsaw, Poland
+48.22.209.98.35
Assago, Italy
+39.02.932.7141
Chat with us:
nvent.com/schroff

Asia

Shanghai, China
+86.21.2412.6943
Qingdao, China
+86.532.8771.6101
Singapore
+65.6768.5800
Shin-Yokohama, Japan
+81.45.476.0271
Chat with us:
nvent.com/schroff

Middle East & India

Dubai, United Arab
Emirates
+971.4.378.1700
Bangalore, India
+91.80.6715.2001
Istanbul, Turkey
+90.216.250.7374
Chat with us:
nvent.com/schroff



Vores kraftfulde portefølje af mærker:

CADDY ERICO HOFFMAN ILSCO SCHROFF TRACHTE