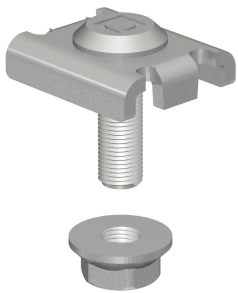


PEMSA Wire Basket Tray Universal Part Clamp

Data Solutions

CATALOG NUMBER

WBTUPCEG



CERTIFICATIONS



FEATURES

Significant mechanical clamping strength

Captive screw

IEC 61537 load rating and earthing compliant

PRODUCT ATTRIBUTES

Article Number: 820716

Material: Steel

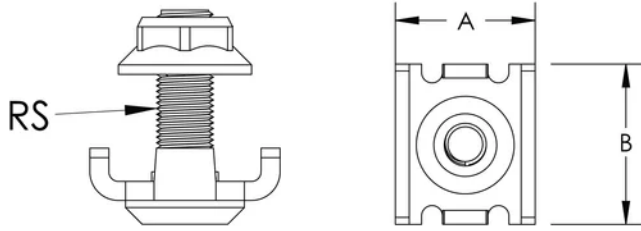
Finish: Electrogalvanized

A: 20mm

B: 23mm

Rod Size (RS): 6

DIAGRAMS



WARNING

nVent products shall be installed and used only as indicated in nVent's product instruction sheets and training materials. Instruction sheets are available at www.nvent.com and from your nVent customer service representative. Improper installation, misuse, misapplication or other failure to completely follow nVent's instructions and warnings may cause product malfunction, property damage, serious bodily injury and death and/or void your warranty.



Our powerful portfolio of brands:

CADDY ERICO HOFFMAN ILSCO SCHROFF TRACHTE