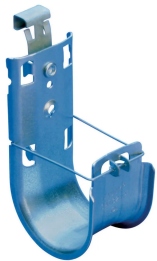


nVent CADDY Cat HP J-Hook with Strut Attachment Clip, 1" dia

Data Solutions

CATALOG NUMBER

CAT16HPESC



CERTIFICATIONS



FEATURES

Attaches to open side of a strut channel

Provides optimal support for high-performance data cable, up to and including Cat 5e, Cat 6, Cat 6A, Cat 7 and fibre optic

Provides superior fill capacity and load rating over most other non-continuous cable support alternatives

Cost effective alternative to expensive cable tray

Complies with EN 50174-2

Meets ISO®/IEC 14763-2, ANSI®/TIA 568 and ANSI®/TIA 569

PRODUCT ATTRIBUTES

Material: Steel; Spring Steel

Finish: Pregalvanized; nVent CADDY Armour

Diameter (Ø): 25mm

Area: 690mm²

Cable Capacity, Cat 5e: 20

Cable Capacity, Cat 6: 15

Cable Capacity, Cat 6A: 10

A: 10mm

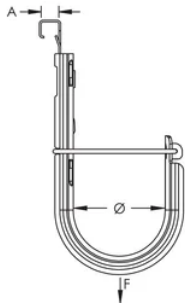
Static Load: 270N

ADDITIONAL PRODUCT DETAILS

Non-continuous supports may not exceed spacing of 5' (1.5 m) per TIA 569-C.9.7 and EN 50174-2.

Cable capacity is calculated based on a 70% fill rate.

DIAGRAMS



WARNING

nVent products shall be installed and used only as indicated in nVent's product instruction sheets and training materials. Instruction sheets are available at www.nvent.com and from your nVent customer service representative. Improper installation, misuse, misapplication or other failure to completely follow nVent's instructions and warnings may cause product malfunction, property damage, serious bodily injury and death and/or void your warranty.



Our powerful portfolio of brands:

CADDY ERICO HOFFMAN ILSCO SCHROFF TRACHTE