

FleXbus HCBC Plate with PE Connection, 0.492" Hole 1, 0.73" Hole 2

Data Solutions

CATALOG NUMBER

FLEXPLATE100PE



CERTIFICATIONS



FEATURES

Rigid tinned copper part provides strong electrical contact to maintain braid expansion during compression

HCBC Plate allows FleXbus Conductor insulation to overlap the connection palm

HCBC Plate with PE connection allows conductor to be added to interconnect neutral and ground/earth

Tinned copper allows for copper or aluminum conductor connections

Installs quickly and easily

RoHS compliant

PRODUCT ATTRIBUTES

Article Number: 508183

Material: Copper

Finish: Tinned

A: 115mm

B: 100mm

C: 45mm

D: 51mm

E: 70mm

Hole Size 1 (HS1): 12.5mm

Hole Size 2 (HS2): 18.5mm

Thickness (T): 5mm

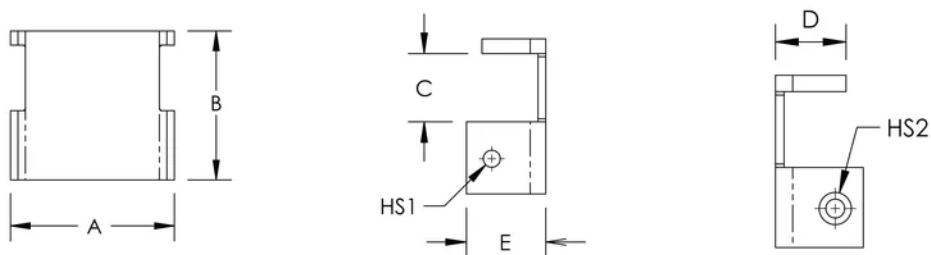
Conductor Size: 960 mm²; 1280 mm²; 1810 mm²

Unit Weight: 0.71kg

ADDITIONAL PRODUCT DETAILS

It is mandatory to use the HCBC Clamp associated with the HCBC Plate for proper Flexbus Conductor connection.

DIAGRAMS



WARNING

nVent products shall be installed and used only as indicated in nVent's product instruction sheets and training materials. Instruction sheets are available at www.nvent.com and from your nVent customer service representative. Improper installation, misuse, misapplication or other failure to completely follow nVent's instructions and warnings may cause product malfunction, property damage, serious bodily injury and death and/or void your warranty.



Our powerful portfolio of brands:

CADDY ERICO HOFFMAN ILSCO SCHROFF TRACHTE