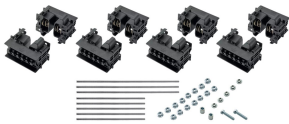


# FleXbus Support Kit on Edge 3 Poles, Neutral, 3.445" x 4.862"

## Data Solutions

### CATALOG NUMBER

**FLEXSUPEDG50TN**



### CERTIFICATIONS



### FEATURES

Adjustable clip adapts to support different conductor thicknesses (open/closed position)

Strong, mechanical resistance and short-circuit tested as per IEC 61914 up to 67kA rms – 147kA Peak

Adjustable distance between each conductor (12,5 mm pitch)

Installation side-by-side or on top

For use with 3P configuration

Mounting options for ceiling or wall

Mounting options for different cable trays types

Mounting options for horizontal or vertical orientations

## PRODUCT ATTRIBUTES

---

Article Number: 508102

Complies With: IEC® 60695-2-11 (Glow Wire Test 960 °C); IEC® 61439.1; IEC® 61914

Dielectric Strength, IEC 61439.1: 3500 VAC @ 1 min

Dielectric Strength, UL: 1500; 1500

Finish: Electrogalvanized

Flammability Rating: UL® 94V-0

Halogen Free Rating: IEC® 60754-1

Insulation Voltage: 1000; 1500

Low Smoke Rating: ISO 5659-2

Material: Glass Fibre Reinforced Polyamide; Steel

Working Temperature: -40 to 130°C

A: 87.5mm

Depth (D): 78.5mm

Height (H): 123.5mm

Conductor Size: 220 mm<sup>2</sup>; 360 mm<sup>2</sup>; 545 mm<sup>2</sup>; 640 mm<sup>2</sup>

Unit Weight: 1.33kg

Installation Standard: AS 3008; BS 7671; CEI 64-8; CSN; DIN VDE 0100; HD 384; IEC® 60364; NBR 5410; NEN 1010; NFC 15-100; NIBT-NIN; NP (2002); ÔNORM; REBT; RGIE-AREI

## ADDITIONAL PRODUCT DETAILS

---

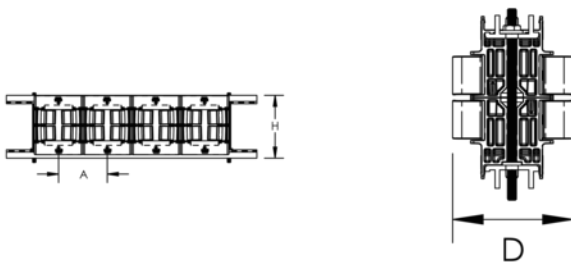
Support kit and aluminum profile are sold separately.

When cable tray is used, we recommend installing a FleXbus Support at each extremity, in order to protect the FleXbus Conductor against potential sharp edges of the cable tray.

For ease of installation of the FleXbus Conductors on cable trays, we recommend using cantilever systems in order to have easy and direct access during installation phases.

## DIAGRAMS

---



## WARNING

---

nVent products shall be installed and used only as indicated in nVent's product instruction sheets and training materials. Instruction sheets are available at [www.nvent.com](http://www.nvent.com) and from your nVent customer service representative. Improper installation, misuse, misapplication or other failure to completely follow nVent's instructions and warnings may cause product malfunction, property damage, serious bodily injury and death and/or void your warranty.



Our powerful portfolio of brands:

**CADDY   ERICO   HOFFMAN   ILSCO   SCHROFF   TRACHTE**