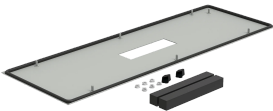


# Closure Plates

Closure Plates seal the ends of the Cable Entry Cabinet to maintain environmental integrity. DIN and adjustable closure plates are available to facilitate cable connection into the cabinet.



## FEATURES

---

14 gauge (1.75mm) mild steel

RAL 7035 textured light-gray polyester powder paint finish

Solid, DIN cutout, and Adjustable closure plates are available

Closure Plate Adapters for Cutouts are sold separately

## SPECIFICATIONS

---

**Thickness:** 1.9mm  
**Color:** Light Gray  
**Finish:** Powder Coated  
**Color Code:** RAL 7035

Table 1/1

Catalog Number	Article Number	Material
PCECGP6	34319	Mild Steel
P2FCP5	33107	Mild Steel
PCECGP8	34329	Mild Steel
PCECGPD5	34339	Mild Steel
P2FCP4	33108	Mild Steel
P2FCP6	33106	Mild Steel
PCECGPD8	34359	Mild Steel
PCEGPA6	34379	Mild Steel
P2FCP10	33104	Mild Steel
PCECGP5	34309	Mild Steel
P2FCP8	33105	Mild Steel
PCEGPA8	34389	Mild Steel

## WARNING

---

nVent products shall be installed and used only as indicated in nVent's product instruction sheets and training materials. Instruction sheets are available at [www.nvent.com](http://www.nvent.com) and from your nVent customer service representative. Improper installation, misuse, misapplication or other failure to completely follow nVent's instructions and warnings may cause product malfunction, property damage, serious bodily injury and death and/or void your warranty.



Our powerful portfolio of brands:

**CADDY ERICO HOFFMAN ILSCO SCHROFF TRACHTE**