

# Modular Single Door, MCS



The mild steel single door combinable floor standing enclosure range, MCS, with a IP 55 protection degree, is available off the shelf in many different sizes. This enclosure range is well suited for many different applications. The risk for component failure, and with that unnecessary downtime, is eliminated as water and dust are prevented from entering the enclosure.

## INDUSTRY STANDARDS

UL 508A Listed; Type 12; File No. E61997

cUL Listed per CSA C22.2 No.0, No.0.4, No.14, No.94; Type 12; File No. E61997

NEMA/EEMAC Type 12

CSA, File No. 1442951: Type 12

IEC 62208 IP55

CE, UK CA, UL, DNV

## FEATURES

**Material:** Frame: 1.5 mm painted steel. Door: 2 mm painted steel. Rear, roof and side panels: 1.5 mm painted steel. Mounting plate: 3 mm galvanized steel. Bottom plates: 1 mm galvanized steel.

**Frame:** Seam welded reversed open profiles with 25 mm hole pattern, according to DIN 43660. Including integrated external hole pattern.

**Door:** Mounted with four hinges allowing left or right hand opening. Including door frame with 25 mm hole pattern.

**Rear panel:** Fitted by M6 torx screws. Standard facilities for rear door mounting. RD version comes with rear door instead of rear panel.

**Side panels:** Supplied as an accessory.

**Roof panel:** Removable.

**Lock:** Espagnolette 4-point locking system. Does not interfere with the enclosure inner space. Standard double-bit lock with 3 mm insert. Standard inserts, cylinders, lift handles and T-handles are available as accessories.

**Bottom plates:** Consists of three or four (D>600) pieces.

**Mounting plate:** Double folded and slides into position. Adjustable in depth by steps of 25 mm, with the MPD02 accessory. Supplied, attached on the outside of the enclosure packaging.

**Earthing:** All panels are earthed through their fittings and are equipped with a separate earthing stud.

**Finish:** RAL 7035 structured powder coating.

**Protection:** Complies with IP 55 | TYPE 12 | IK 10.

**Mounting requirements:** Standard delivery ready for combined installation. For stand-alone installation add side panels.

Delivery: Frame with fitted door, rear panel, roof panel, bottom plates, mounting plate (not included for PER5 version) and door frame. For 400 mm wide enclosures, a mounting plate, bottom plates and door frame are not included. For enclosures 2200 mm height, delivery includes two CMB profiles mounted in depth. Delivery also includes earthing bolts. Delivered on a pallet which is identical to the width of the enclosure to allow baying without removal. All packing material is recyclable.

## SPECIFICATIONS

<b>Body Thickness:</b>	1.5mm
<b>Door Thickness:</b>	2mm
<b>Material:</b>	Mild Steel
<b>Finish:</b>	Powder Coated
<b>Color Code:</b>	RAL 7035

Table 1/5

Catalog Number	Article Number	Height (H)	Width (W)	Depth (D)	Mounting Plate Included	Rear Door Included
MCS20055PER5		2000mm	500mm	500mm	No	No
MCS20064R5	MCS20064R5	2000mm	600mm	400mm	Yes	No
MCS22065R5	MCS22065R5	2200mm	600mm	500mm	Yes	No
MCS20105R5	MCS20105R5	2000mm	1000mm	500mm	Yes	No
MCS18066R5	MCS18066R5	1800mm	600mm	600mm	Yes	No
MCS20084PER5		2000mm	800mm	400mm	No	No
MCS22108R5	MCS22108R5	2200mm	1000mm	800mm	Yes	No
MCS18055R5	MCS18055R5	1800mm	500mm	500mm	Yes	No
MCS20064PER5		2000mm	600mm	400mm	No	No
MCS22068R5	MCS22068R5	2200mm	600mm	800mm	Yes	No
MCS18084PER5		1800mm	800mm	400mm	No	No
MCS20084R5	MCS20084R5	2000mm	800mm	400mm	Yes	No
MCS20055R5	MCS20055R5	2000mm	500mm	500mm	Yes	No
MCS22086R5	MCS22086R5	2200mm	800mm	600mm	Yes	No
MCS16065PER5	MCS16065PER5	1600mm	600mm	500mm	No	No
MCS16065R5	MCS16065R5	1600mm	600mm	500mm	Yes	No
MCS20085PER5		2000mm	800mm	500mm	No	No
MCS20106PER5		2000mm	1000mm	600mm	No	No
MCS14085R5	MCS14085R5	1400mm	800mm	500mm	Yes	No
MCS20088RDR5	MCS20088RDR5	2000mm	800mm	800mm	Yes	Yes

Table 2/5

Catalog Number	Article Number	Height (H)	Width (W)	Depth (D)	Mounting Plate Included	Rear Door Included
MCS18084R5	MCS18084R5	1800mm	800mm	400mm	Yes	No
MCS20048R5	MCS20048R5	2000mm	400mm	800mm	No	No
MCS18055PER5		1800mm	500mm	500mm	No	No
MCS16085PER5	MCS16085PER5	1600mm	800mm	500mm	No	No

Catalog Number	Article Number	Height (H)	Width (W)	Depth (D)	Mounting Plate Included	Rear Door Included
MCS20085R5	MCS20085R5	2000mm	800mm	500mm	Yes	No
MCS22105PER5	MCS22105PER5	2200mm	1000mm	500mm	No	No
MCS20086PER5		2000mm	800mm	600mm	No	No
MCS22065PER5	MCS22065PER5	2200mm	600mm	500mm	No	No
MCS20046R5	MCS20046R5	2000mm	400mm	600mm	No	No
MCS18065R5	MCS18065R5	1800mm	600mm	500mm	Yes	No
MCS20068PERDR5	MCS20068PERDR5	2000mm	600mm	800mm	No	Yes
MCS20104R5	MCS20104R5	2000mm	1000mm	400mm	Yes	No
MCS18065PER5		1800mm	600mm	500mm	No	No
MCS22088PER5		2200mm	800mm	800mm	No	No
MCS18068R5	MCS18068R5	1800mm	600mm	800mm	Yes	No
MCS20068R5	MCS20068R5	2000mm	600mm	800mm	Yes	No
MCS20068PER5		2000mm	600mm	800mm	No	No
MCS18064R5	MCS18064R5	1800mm	600mm	400mm	Yes	No
MCS16085R5	MCS16085R5	1600mm	800mm	500mm	Yes	No
MCS22066PER5	MCS22066PER5	2200mm	600mm	600mm	No	No

Table 3/5

Catalog Number	Article Number	Height (H)	Width (W)	Depth (D)	Mounting Plate Included	Rear Door Included
MCS20066R5	MCS20066R5	2000mm	600mm	600mm	Yes	No
MCS22085PER5	MCS22085PER5	2200mm	800mm	500mm	No	No
MCS20105PER5		2000mm	1000mm	500mm	No	No
MCS18104PER5		1800mm	1000mm	400mm	No	No
MCS20068RDR5	MCS20068RDR5	2000mm	600mm	800mm	Yes	Yes
MCS18108R5	MCS18108R5	1800mm	1000mm	800mm	Yes	No
MCS200810PERDR5	MCS200810PERDR5	2000mm	800mm	1000mm	No	Yes
MCS20066PER5		2000mm	600mm	600mm	No	No
MCS20108RDR5	MCS20108RDR5	2000mm	1000mm	800mm	Yes	Yes
MCS18066PER5		1800mm	600mm	600mm	No	No
MCS20104PER5		2000mm	1000mm	400mm	No	No
MCS20065R5	MCS20065R5	2000mm	600mm	500mm	Yes	No
MCS22106R5	MCS22106R5	2200mm	1000mm	600mm	Yes	No
MCS18064PER5		1800mm	600mm	400mm	No	No
MCS200810RDR5	MCS200810RDR5	2000mm	800mm	1000mm	Yes	Yes

Catalog Number	Article Number	Height (H)	Width (W)	Depth (D)	Mounting Plate Included	Rear Door Included
MCS20065PER5		2000mm	600mm	500mm	No	No
MCS22085R5	MCS22085R5	2200mm	800mm	500mm	Yes	No
MCS220810PER5	MCS220810PER5	2200mm	800mm	1000mm	No	No
MCS22068PER5	MCS22068PER5	2200mm	600mm	800mm	No	No
MCS22088R5	MCS22088R5	2200mm	800mm	800mm	Yes	No

Table 4/5

Catalog Number	Article Number	Height (H)	Width (W)	Depth (D)	Mounting Plate Included	Rear Door Included
MCS18085R5	MCS18085R5	1800mm	800mm	500mm	Yes	No
MCS18086R5	MCS18086R5	1800mm	800mm	600mm	Yes	No
MCS20086R5	MCS20086R5	2000mm	800mm	600mm	Yes	No
MCS14065PER5	MCS14065PER5	1400mm	600mm	500mm	No	No
MCS18104R5	MCS18104R5	1800mm	1000mm	400mm	Yes	No
MCS18044R5	MCS18044R5	1800mm	400mm	400mm	No	No
MCS18106R5	MCS18106R5	1800mm	1000mm	600mm	Yes	No
MCS18106PER5		1800mm	1000mm	600mm	No	No
MCS18085PER5		1800mm	800mm	500mm	No	No
MCS200810R5	MCS200810R5	2000mm	800mm	1000mm	Yes	No
MCS18045R5	MCS18045R5	1800mm	400mm	500mm	No	No
MCS18105PER5		1800mm	1000mm	500mm	No	No
MCS20088PER5		2000mm	800mm	800mm	No	No
MCS20088R5	MCS20088R5	2000mm	800mm	800mm	Yes	No
MCS18086PER5		1800mm	800mm	600mm	No	No
MCS220810R5	MCS220810R5	2200mm	800mm	1000mm	Yes	No
MCS20086RDR5	MCS20086RDR5	2000mm	800mm	600mm	Yes	Yes
MCS20108PER5		2000mm	1000mm	800mm	No	No
MCS18105R5	MCS18105R5	1800mm	1000mm	500mm	Yes	No
MCS14065R5	MCS14065R5	1400mm	600mm	500mm	Yes	No

Table 5/5

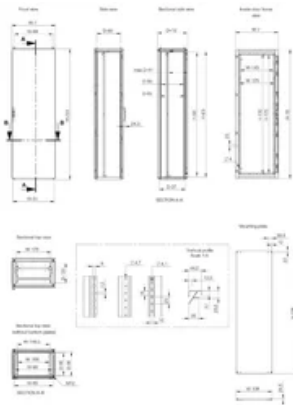
Catalog Number	Article Number	Height (H)	Width (W)	Depth (D)	Mounting Plate Included	Rear Door Included
MCS20108R5	MCS20108R5	2000mm	1000mm	800mm	Yes	No
MCS20086PERDR5	MCS20086PERDR5	2000mm	800mm	600mm	No	Yes
MCS20108PERDR5	MCS20108PERDR5	2000mm	1000mm	800mm	No	Yes

Catalog Number	Article Number	Height (H)	Width (W)	Depth (D)	Mounting Plate Included	Rear Door Included
MCS20088PERDR5	MCS20088PERDR5	2000mm	800mm	800mm	No	Yes
MCS20045R5	MCS20045R5	2000mm	400mm	500mm	No	No
MCS18046R5	MCS18046R5	1800mm	400mm	600mm	No	No
MCS200810PER5	MCS200810PER5	2000mm	800mm	1000mm	No	No
MCS22066R5	MCS22066R5	2200mm	600mm	600mm	Yes	No
MCS20106R5	MCS20106R5	2000mm	1000mm	600mm	Yes	No
MCS20044R5	MCS20044R5	2000mm	400mm	400mm	No	No
MCS22086PER5	MCS22086PER5	2200mm	800mm	600mm	No	No
MCS22105R5	MCS22105R5	2200mm	1000mm	500mm	Yes	No

## ADDITIONAL PRODUCT DETAILS

SPM mild steel side panels must be ordered separately to close the cabinets (individual or assembled), in order to maintain the protection rating.

## DIAGRAMS



## WARNING

nVent products shall be installed and used only as indicated in nVent's product instruction sheets and training materials. Instruction sheets are available at [www.nvent.com](http://www.nvent.com) and from your nVent customer service representative. Improper installation, misuse, misapplication or other failure to completely follow nVent's instructions and warnings may cause product malfunction, property damage, serious bodily injury and death and/or void your warranty.



Our powerful portfolio of brands:

**CADDY ERICO HOFFMAN ILSCO SCHROFF TRACHTE**