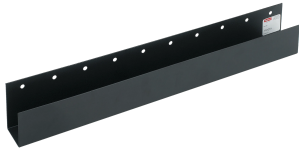


# ProLine Horizontal Cable Trough



The ProLine Horizontal Cable Trough is used for routing cable front-to-back in a server or data cabinet. It mounts to a side or top of a 1- or 3-row grid strap. It can also mount directly to mounting channels with the APSM6CN Mounting Kit. This product features the ability to use multiple units together.

## FEATURES

---

The ProLine Horizontal Cable Trough is used for routing cable front-to-back in a server or data cabinet

It mounts to a side or top of a 1- or 3-row grid strap

It can also mount directly to mounting channels with the APSM6CN Mounting Kit

This product features the ability to use multiple units together

## SPECIFICATIONS

---

**Color:** Jet Black  
**Material:** Mild Steel  
**Finish:** Powder Coated  
**Color Code:** RAL 9005

Table 1/1

Catalog Number	Article Number	Thickness
PHCT4	10243	1.52mm
PHCT1	10238	1.52mm
PHCT3	10242	1.52mm
PHCT2	10241	1.52mm

## WARNING

---

nVent products shall be installed and used only as indicated in nVent's product instruction sheets and training materials. Instruction sheets are available at [www.nvent.com](http://www.nvent.com) and from your nVent customer service representative. Improper installation, misuse, misapplication or other failure to completely follow nVent's instructions and warnings may cause product malfunction, property damage, serious bodily injury and death and/or void your warranty.



Our powerful portfolio of brands:

**CADDY ERICO HOFFMAN ILSCO SCHROFF TRACHTE**