

# Dual Terminal Adaptor

## Data Solutions

### CATALOG NUMBER

**TERMDUALCOUP**



### FEATURES

For connection of nVent ERICO System 3000 air terminals to dual runs of nVent ERICO Ericore downconductor

### PRODUCT ATTRIBUTES

Material: Stainless Steel 316 (EN 1.4401)

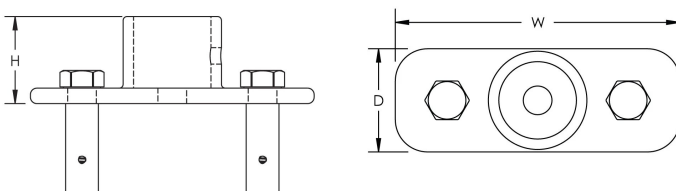
Depth (D): 68mm

Height (H): 80mm

Width (W): 220mm

Unit Weight: 3kg

### DIAGRAMS



## WARNING

---

nVent products shall be installed and used only as indicated in nVent's product instruction sheets and training materials. Instruction sheets are available at [www.nvent.com](http://www.nvent.com) and from your nVent customer service representative. Improper installation, misuse, misapplication or other failure to completely follow nVent's instructions and warnings may cause product malfunction, property damage, serious bodily injury and death and/or void your warranty.



Our powerful portfolio of brands:

**CADDY ERICO HOFFMAN ILSCO SCHROFF TRACHTE**