

Heavy Duty Pipe Clamp per DIN 3567, Steel, Plain, 323.9mm OD, 12" Pipe, 300 DN

CATALOG NUMBER

DIN323PL



FEATURES

For high static requirements in industrial construction

Suitable for fix point applications

Can be welded onto T-beam to form a sliding element

PRODUCT ATTRIBUTES

Article Number: 400185

Material: Steel

Finish: Plain

Outer Diameter (OD): 323.9 mm

Pipe Size: 12"

NB/DN: 300

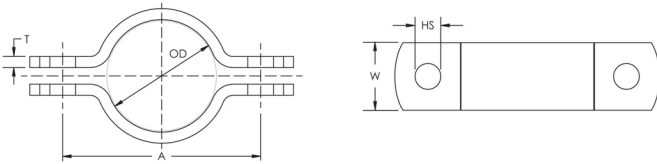
Hole Size (HS): 23 mm

Width (W): 60 mm

Thickness (T): 8 mm

A: 398 mm

DIAGRAMS



WARNING

nVent products shall be installed and used only as indicated in nVent's product instruction sheets and training materials. Instruction sheets are available at www.nvent.com and from your nVent customer service representative. Improper installation, misuse, misapplication or other failure to completely follow nVent's instructions and warnings may cause product malfunction, property damage, serious bodily injury and death and/or void your warranty.

North America

+1.800.753.9221
Option 1 – Customer Care
Option 2 – Technical
Support

Europe

Netherlands:
+31 800-0200135
France:
+33 800 901 793

Europe

Germany:
800 1890272
Other Countries:
+31 13 5835404

APAC

Shanghai:
+ 86 21 2412 1618/19
Sydney:
+61 2 9751 8500



Our powerful portfolio of brands:

CADDY ERICO HOFFMAN ILSCO SCHROFF TRACHTE

