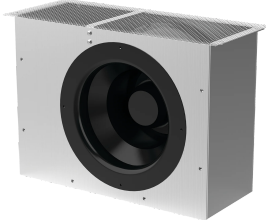


# Impeller



Each Impeller package includes one high-performance, 115 VAC 60 Hz, shielded impeller and an aluminum housing. Each vented base has a provision for two impellers per door. Please see performance chart in spec sheet.

## FEATURES

---

Impeller packages provide additional airflow to WeatherFlo outdoor enclosures

## SPECIFICATIONS

Table 1/1

Catalog Number	Article Number	Height	Width	Depth	Material	Finish
WFHDFP	21002	343mm	461mm	168mm	Aluminum	Powder Coated

## WARNING

nVent products shall be installed and used only as indicated in nVent's product instruction sheets and training materials. Instruction sheets are available at [www.nvent.com](http://www.nvent.com) and from your nVent customer service representative. Improper installation, misuse, misapplication or other failure to completely follow nVent's instructions and warnings may cause product malfunction, property damage, serious bodily injury and death and/or void your warranty.



Our powerful portfolio of brands:

**CADDY ERICO HOFFMAN ILSCO SCHROFF TRACHTE**