

Modular Single Door, MCS



The mild steel single door combinable floor standing enclosure range, MCS, with a IP 55 protection degree, is available off the shelf in many different sizes. This enclosure range is well suited for many different applications. The risk for component failure, and with that unnecessary downtime, is eliminated as water and dust are prevented from entering the enclosure.

INDUSTRY STANDARDS

UL 508A Listed; Type 12; File No. E61997

cUL Listed per CSA C22.2 No.0, No.0.4, No.14, No.94; Type 12; File No. E61997

NEMA/EEMAC Type 12

CSA, File No. 1442951: Type 12

IEC 62208 IP55

CE, UK CA, UL, DNV

FEATURES

Material: Frame: 1.5 mm painted steel. Door: 2 mm painted steel. Rear, roof and side panels: 1.5 mm painted steel. Mounting plate: 3 mm galvanized steel. Bottom plates: 1 mm galvanized steel.

Frame: Seam welded reversed open profiles with 25 mm hole pattern, according to DIN 43660. Including integrated external hole pattern.

Door: Mounted with four hinges allowing left or right hand opening. Including door frame with 25 mm hole pattern.

Rear panel: Fitted by M6 torx screws. Standard facilities for rear door mounting. RD version comes with rear door instead of rear panel.

Side panels: Supplied as an accessory.

Roof panel: Removable.

Lock: Espagnolette 4-point locking system. Does not interfere with the enclosure inner space. Standard double-bit lock with 3 mm insert. Standard inserts, cylinders, lift handles and T-handles are available as accessories.

Bottom plates: Consists of three or four (D>600) pieces.

Mounting plate: Double folded and slides into position. Adjustable in depth by steps of 25 mm, with the MPD02 accessory. Supplied, attached on the outside of the enclosure packaging.

Earthing: All panels are earthed through their fittings and are equipped with a separate earthing stud.

Finish: RAL 7035 structured powder coating.

Protection: Complies with IP 55 | TYPE 12 | IK 10.

Mounting requirements: Standard delivery ready for combined installation. For stand-alone installation add side panels.

Delivery: Frame with fitted door, rear panel, roof panel, bottom plates, mounting plate (not included for PER5 version) and door frame. For 400 mm wide enclosures, a mounting plate, bottom plates and door frame are not included. For enclosures 2200 mm height, delivery includes two CMB profiles mounted in depth. Delivery also includes earthing bolts. Delivered on a pallet which is identical to the width of the enclosure to allow baying without removal. All packing material is recyclable.

SPECIFICATIONS

Body Thickness: 1.5mm
Door Thickness: 2mm
Material: Mild Steel
Finish: Powder Coated
Color Code: RAL 7035

Table 1/6

| Catalog Number | Article Number | E-Number | Height (H) | Width (W) | Depth (D) | Mounting Plate Included |
|-----------------|----------------|----------|------------|-----------|-----------|-------------------------|
| MCS20108R5 | | 2418046 | 2000mm | 1000mm | 800mm | Yes |
| MCS18106R5 | | 2411602 | 1800mm | 1000mm | 600mm | Yes |
| MCS20085PER5 | | 2418033 | 2000mm | 800mm | 500mm | No |
| MCS18064PER5 | | 2418003 | 1800mm | 600mm | 400mm | No |
| MCS18084PER5 | | 2418007 | 1800mm | 800mm | 400mm | No |
| MCS220810R5 | MCS220810R5 | | 2200mm | 800mm | 1000mm | Yes |
| MCS22066PER5 | MCS22066PER5 | 2418047 | 2200mm | 600mm | 600mm | No |
| MCS20068PERD R5 | | 2411605 | 2000mm | 600mm | 800mm | No |
| MCS20108RDR5 | | 2411615 | 2000mm | 1000mm | 800mm | Yes |
| MCS20085R5 | | 2418034 | 2000mm | 800mm | 500mm | Yes |
| MCS20068PER5 | | 2418027 | 2000mm | 600mm | 800mm | No |
| MCS16065R5 | | | 1600mm | 600mm | 500mm | Yes |
| MCS18106PER5 | | 2411601 | 1800mm | 1000mm | 600mm | No |
| MCS18084R5 | | 2418008 | 1800mm | 800mm | 400mm | Yes |
| MCS18055R5 | | 2411598 | 1800mm | 500mm | 500mm | Yes |
| MCS20055PER5 | | 2411603 | 2000mm | 500mm | 500mm | No |
| MCS14085R5 | | | 1400mm | 800mm | 500mm | Yes |
| MCS200610R5 | | | 2000mm | 600mm | 1000mm | Yes |
| MCS220610R5 | | | 2200mm | 600mm | 1000mm | Yes |
| MCS20108PERD R5 | | 2411614 | 2000mm | 1000mm | 800mm | No |

Table 2/6

| Catalog Number | Article Number | E-Number | Height (H) | Width (W) | Depth (D) | Mounting Plate Included |
|----------------|----------------|----------|------------|-----------|-----------|-------------------------|
| MCS220810PER5 | MCS220810PER5 | | 2200mm | 800mm | 1000mm | No |
| MCS180810R5 | | | 1800mm | 800mm | 1000mm | Yes |
| MCS16085R5 | | | 1600mm | 800mm | 500mm | Yes |

| Catalog Number | Article Number | E-Number | Height (H) | Width (W) | Depth (D) | Mounting Plate Included |
|------------------|------------------|----------|------------|-----------|-----------|-------------------------|
| MCS20086PER5 | | 2418035 | 2000mm | 800mm | 600mm | No |
| MCS18085PER5 | | 2418009 | 1800mm | 800mm | 500mm | No |
| MCS20066R5 | | 2418026 | 2000mm | 600mm | 600mm | Yes |
| MCS20108PER5 | | 2418045 | 2000mm | 1000mm | 800mm | No |
| MCS16065PER5 | MCS16065PER5 | | 1600mm | 600mm | 500mm | No |
| MCS18055PER5 | | 2411597 | 1800mm | 500mm | 500mm | No |
| MCS20066PER5 | | 2418025 | 2000mm | 600mm | 600mm | No |
| MCS20106R5 | | 2418044 | 2000mm | 1000mm | 600mm | Yes |
| MCS18105R5 | | 2418016 | 1800mm | 1000mm | 500mm | Yes |
| MCS18066PER5 | | 2411599 | 1800mm | 600mm | 600mm | No |
| MCS22088PER5 | | 2418053 | 2200mm | 800mm | 800mm | No |
| MCS200810PER DR5 | MCS200810PER DR5 | 2411607 | 2000mm | 800mm | 1000mm | No |
| MCS20045R5 | | 2418018 | 2000mm | 400mm | 500mm | No |
| MCS22086R5 | MCS22086R5 | 2418052 | 2200mm | 800mm | 600mm | Yes |
| MCS22088R5 | | 2418054 | 2200mm | 800mm | 800mm | Yes |
| MCS200610RDR 5 | | | 2000mm | 600mm | 1000mm | Yes |
| MCS18065R5 | | 2418006 | 1800mm | 600mm | 500mm | Yes |

Table 3/6

| Catalog Number | Article Number | E-Number | Height (H) | Width (W) | Depth (D) | Mounting Plate Included |
|----------------|----------------|----------|------------|-----------|-----------|-------------------------|
| MCS18065PER5 | | 2418005 | 1800mm | 600mm | 500mm | No |
| MCS20068RDR5 | | 2411606 | 2000mm | 600mm | 800mm | Yes |
| MCS180810PER 5 | | | 1800mm | 800mm | 1000mm | No |
| MCS200810RDR 5 | | 2411608 | 2000mm | 800mm | 1000mm | Yes |
| MCS22086PER5 | MCS22086PER5 | 2418051 | 2200mm | 800mm | 600mm | No |
| MCS180610RDR 5 | | | 1800mm | 600mm | 1000mm | Yes |
| MCS14065PER5 | MCS14065PER5 | | 1400mm | 600mm | 500mm | No |
| MCS20046R5 | | 2418019 | 2000mm | 400mm | 600mm | No |
| MCS180610R5 | | | 1800mm | 600mm | 1000mm | Yes |
| MCS20044R5 | | 2418017 | 2000mm | 400mm | 400mm | No |
| MCS20084PER5 | | 2418031 | 2000mm | 800mm | 400mm | No |
| MCS18064R5 | | 2418004 | 1800mm | 600mm | 400mm | Yes |

| Catalog Number | Article Number | E-Number | Height (H) | Width (W) | Depth (D) | Mounting Plate Included |
|------------------|----------------|----------|------------|-----------|-----------|-------------------------|
| MCS220610PER DR5 | | | 2200mm | 600mm | 1000mm | No |
| MCS220810PER DR5 | | | 2200mm | 800mm | 1000mm | No |
| MCS22068R5 | MCS22068R5 | 2418050 | 2200mm | 600mm | 800mm | Yes |
| MCS20068R5 | | 2418028 | 2000mm | 600mm | 800mm | Yes |
| MCS14065R5 | | | 1400mm | 600mm | 500mm | Yes |
| MCS22068PER5 | MCS22068PER5 | 2418049 | 2200mm | 600mm | 800mm | No |
| MCS20084R5 | | 2418032 | 2000mm | 800mm | 400mm | Yes |
| MCS18066R5 | | 2411600 | 1800mm | 600mm | 600mm | Yes |

Table 4/6

| Catalog Number | Article Number | E-Number | Height (H) | Width (W) | Depth (D) | Mounting Plate Included |
|------------------|----------------|----------|------------|-----------|-----------|-------------------------|
| MCS200810PER 5 | MCS200810PER 5 | | 2000mm | 800mm | 1000mm | No |
| MCS20048R5 | | 2418020 | 2000mm | 400mm | 800mm | No |
| MCS180810PER DR5 | | | 1800mm | 800mm | 1000mm | No |
| MCS22066R5 | MCS22066R5 | 2418048 | 2200mm | 600mm | 600mm | Yes |
| MCS20064PER5 | | 2418021 | 2000mm | 600mm | 400mm | No |
| MCS180810RDR 5 | | | 1800mm | 800mm | 1000mm | Yes |
| MCS220610PER 5 | | | 2200mm | 600mm | 1000mm | No |
| MCS18104R5 | | 2418014 | 1800mm | 1000mm | 400mm | Yes |
| MCS200610PER 5 | | | 2000mm | 600mm | 1000mm | No |
| MCS18086PER5 | | 2418011 | 1800mm | 800mm | 600mm | No |
| MCS200810R5 | MCS200810R5 | | 2000mm | 800mm | 1000mm | Yes |
| MCS18044R5 | | 2418000 | 1800mm | 400mm | 400mm | No |
| MCS20105PER5 | | 2418041 | 2000mm | 1000mm | 500mm | No |
| MCS20088RDR5 | | 2411613 | 2000mm | 800mm | 800mm | Yes |
| MCS18105PER5 | | 2418015 | 1800mm | 1000mm | 500mm | No |
| MCS220810RDR 5 | | | 2200mm | 800mm | 1000mm | Yes |
| MCS180610PER DR5 | | | 1800mm | 600mm | 1000mm | No |
| MCS12065R5 | | | 1200mm | 600mm | 500mm | Yes |
| MCS20065PER5 | | 2418023 | 2000mm | 600mm | 500mm | No |

| Catalog Number | Article Number | E-Number | Height (H) | Width (W) | Depth (D) | Mounting Plate Included |
|------------------|----------------|----------|------------|-----------|-----------|-------------------------|
| MCS200610PER DR5 | | | 2000mm | 600mm | 1000mm | No |

Table 5/6

| Catalog Number | Article Number | E-Number | Height (H) | Width (W) | Depth (D) | Mounting Plate Included |
|----------------|----------------|----------|------------|-----------|-----------|-------------------------|
| MCS20055R5 | | 2411604 | 2000mm | 500mm | 500mm | Yes |
| MCS20104R5 | | 2418040 | 2000mm | 1000mm | 400mm | Yes |
| MCS18045R5 | | 2418001 | 1800mm | 400mm | 500mm | No |
| MCS20086RDR5 | | 2411611 | 2000mm | 800mm | 600mm | Yes |
| MCS12085PER5 | | | 1200mm | 800mm | 500mm | No |
| MCS18086R5 | | 2418012 | 1800mm | 800mm | 600mm | Yes |
| MCS12085R5 | | | 1200mm | 800mm | 500mm | Yes |
| MCS220610RDR5 | | | 2200mm | 600mm | 1000mm | Yes |
| MCS20104PER5 | | 2418039 | 2000mm | 1000mm | 400mm | No |
| MCS180610PER5 | | | 1800mm | 600mm | 1000mm | No |
| MCS20088R5 | | 2418038 | 2000mm | 800mm | 800mm | Yes |
| MCS12065PER5 | | | 1200mm | 600mm | 500mm | No |
| MCS18085R5 | | 2418010 | 1800mm | 800mm | 500mm | Yes |
| MCS20086PERDR5 | | 2411610 | 2000mm | 800mm | 600mm | No |
| MCS20065R5 | | 2418024 | 2000mm | 600mm | 500mm | Yes |
| MCS20106PER5 | | 2418043 | 2000mm | 1000mm | 600mm | No |
| MCS20088PER5 | | 2418037 | 2000mm | 800mm | 800mm | No |
| MCS14085PER5 | MCS14085PER5 | | 1400mm | 800mm | 500mm | No |
| MCS20064R5 | | 2418022 | 2000mm | 600mm | 400mm | Yes |
| MCS20105R5 | | 2418042 | 2000mm | 1000mm | 500mm | Yes |

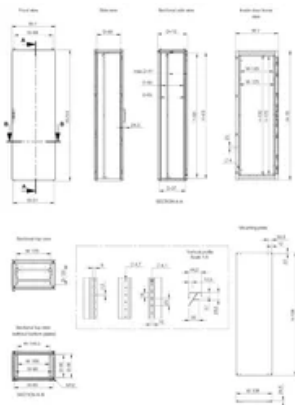
Table 6/6

| Catalog Number | Article Number | E-Number | Height (H) | Width (W) | Depth (D) | Mounting Plate Included |
|----------------|----------------|----------|------------|-----------|-----------|-------------------------|
| MCS20086R5 | | 2418036 | 2000mm | 800mm | 600mm | Yes |
| MCS20088PERDR5 | | 2411612 | 2000mm | 800mm | 800mm | No |
| MCS18046R5 | | 2418002 | 1800mm | 400mm | 600mm | No |
| MCS18104PER5 | | 2418013 | 1800mm | 1000mm | 400mm | No |
| MCS16085PER5 | MCS16085PER5 | | 1600mm | 800mm | 500mm | No |

ADDITIONAL PRODUCT DETAILS

SPM mild steel side panels must be ordered separately to close the cabinets (individual or assembled), in order to maintain the protection rating.

DIAGRAMS



WARNING

nVent products shall be installed and used only as indicated in nVent's product instruction sheets and training materials. Instruction sheets are available at www.nvent.com and from your nVent customer service representative. Improper installation, misuse, misapplication or other failure to completely follow nVent's instructions and warnings may cause product malfunction, property damage, serious bodily injury and death and/or void your warranty.



Our powerful portfolio of brands:

CADDY ERICO HOFFMAN ILSCO SCHROFF TRACHTE