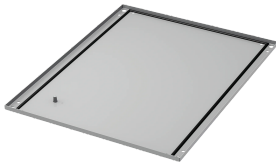


## ProLine G2 Solid Base 0mm

ProLine G2 0-mm Solid Bases are used to close the bottom opening on an enclosure frame.



### FEATURES

---

Casters or levelers can be used to attach the solid base, in place of the included hardware

Seamless polyurethane gasket (UL component recognized) provides a water-tight, dust-tight seal against moisture and contaminants

Includes four M12 hex bolts for installation

Solid Bases are finished with paint over plated surfaces

## SPECIFICATIONS

**Thickness:** 1.52mm  
**Color:** Light Gray  
**Color Code:** RAL 7035

Table 1/2

| Catalog Number | Article Number | Material   | Finish                    |
|----------------|----------------|------------|---------------------------|
| P2B068         | 30961          | Mild Steel | Powder Coated             |
| P2B0188        | 32927          | Mild Steel | Powder Coated             |
| P2B084         | 30963          | Mild Steel | Powder Coated             |
| P2B045         | 30953          | Mild Steel | Powder Coated             |
| P2B0106HF      | 30907          | Mild Steel | Galvanized, Powder Coated |
| P2B0810        | 30962          | Mild Steel | Powder Coated             |
| P2B046         | 30954          | Mild Steel | Powder Coated             |
| P2B0128        | 30935          | Mild Steel | Powder Coated             |
| P2B0108        | 30911          | Mild Steel | Powder Coated             |
| P2B0164        | 32918          | Mild Steel | Powder Coated             |
| P2B064         | 30955          | Mild Steel | Powder Coated             |
| P2B066HF       | 30957          | Mild Steel | Galvanized, Powder Coated |
| P2B0126        | 30934          | Mild Steel | Powder Coated             |
| P2B0124        | 30932          | Mild Steel | Powder Coated             |
| P2B065         | 30956          | Mild Steel | Powder Coated             |
| P2B066         | 30958          | Mild Steel | Powder Coated             |
| P2B0125        | 30933          | Mild Steel | Powder Coated             |
| P2B088         | 30967          | Mild Steel | Powder Coated             |
| P2B0166        | 32923          | Mild Steel | Powder Coated             |
| P2B086HF       | 30965          | Mild Steel | Galvanized, Powder Coated |

Table 2/2

| Catalog Number | Article Number | Material   | Finish        |
|----------------|----------------|------------|---------------|
| P2B0104        | 30905          | Mild Steel | Powder Coated |
| P2B0106        | 30908          | Mild Steel | Powder Coated |
| P2B0185        | 32925          | Mild Steel | Powder Coated |
| P2B0186        | 32926          | Mild Steel | Powder Coated |
| P2B0105        | 30906          | Mild Steel | Powder Coated |
| P2B086         | 30966          | Mild Steel | Powder Coated |
| P2B0165        | 32922          | Mild Steel | Powder Coated |
| P2B0168        | 32924          | Mild Steel | Powder Coated |
| P2B085         | 30964          | Mild Steel | Powder Coated |

## WARNING

---

nVent products shall be installed and used only as indicated in nVent's product instruction sheets and training materials. Instruction sheets are available at [www.nvent.com](http://www.nvent.com) and from your nVent customer service representative. Improper installation, misuse, misapplication or other failure to completely follow nVent's instructions and warnings may cause product malfunction, property damage, serious bodily injury and death and/or void your warranty.



Our powerful portfolio of brands:

**CADDY ERICO HOFFMAN ILSCO SCHROFF TRACHTE**