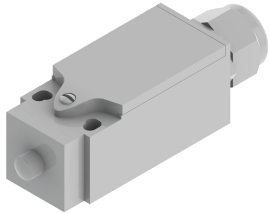


Touch-Safe UL Light Switch



The Touch-Safe light switch is designed to be used with HOFFMAN light kits (AC and DC). It provides a UL listed touch-safe switch that can be used on many enclosure types and includes hardware for most applications. The light switch maintains enclosure overall rating up to UL 508A Type 4X or 12.

FEATURES

UL listed for a touch-safe wire connection

Common bracket and hardware included to mount to various enclosure types easily

PG 11 cable gland entry

Wide operating temperature range: -13F to 158F (-25C to 70C)

Number of poles 2

Linear style actuator

Screw clamp terminals

SPECIFICATIONS

Table 1/1

| Catalog Number | Article Number | Material | Finish | Color | Voltage AC | Voltage DC |
|----------------|----------------|----------|--------|-------|------------|------------|
| LDSWITCH | 19278 | Plastic | Smooth | Gray | 250V | 48V |

WARNING

nVent products shall be installed and used only as indicated in nVent's product instruction sheets and training materials. Instruction sheets are available at www.nvent.com and from your nVent customer service representative. Improper installation, misuse, misapplication or other failure to completely follow nVent's instructions and warnings may cause product malfunction, property damage, serious bodily injury and death and/or void your warranty.



Our powerful portfolio of brands:

CADDY ERICO HOFFMAN ILSCO SCHROFF TRACHTE