

FleXbus HCBC Plate with PE Connection, 0.413" Hole 1, 0.57" Hole 2

Data Solutions

CATALOG NUMBER

FLEXPLATE50PE



CERTIFICATIONS



FEATURES

Rigid tinned copper part provides strong electrical contact to maintain braid expansion during compression

HCBC Plate allows FleXbus Conductor insulation to overlap the connection palm

HCBC Plate with PE connection allows conductor to be added to interconnect neutral and ground/earth

Tinned copper allows for copper or aluminum conductor connections

Installs quickly and easily

RoHS compliant

PRODUCT ATTRIBUTES

Article Number: 508182

Material: Copper

Finish: Tinned

A: 2.56in

B: 3.94in

C: 1.77in

D: 1.61in

E: 2.76in

Hole Size 1 (HS1): 0.41in

Hole Size 2 (HS2): 0.57in

Thickness (T): 0.2in

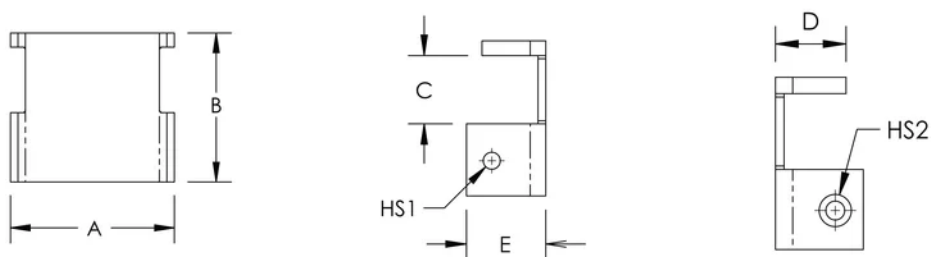
Conductor Size: 220 mm²; 360 mm²; 545 mm²; 640 mm²

Unit Weight: 1.08lb

ADDITIONAL PRODUCT DETAILS

It is mandatory to use the HCBC Clamp associated with the HCBC Plate for proper Flexbus Conductor connection.

DIAGRAMS



WARNING

nVent products shall be installed and used only as indicated in nVent's product instruction sheets and training materials. Instruction sheets are available at www.nvent.com and from your nVent customer service representative. Improper installation, misuse, misapplication or other failure to completely follow nVent's instructions and warnings may cause product malfunction, property damage, serious bodily injury and death and/or void your warranty.



Our powerful portfolio of brands:

CADDY ERICO HOFFMAN ILSCO SCHROFF TRACHTE