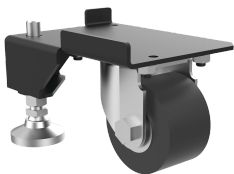


# ProLine S1 Caster and Leveler Kit Heavy Duty, 4.69x6.46x3.97, Black, Composite

## Data Solutions

### CATALOG NUMBER

### PS1CLKHD



Caster/Leveler kits are available in either a light duty (900 lbs.) or heavy duty (3000 lbs.) load rating. The kits are comprised of a set of four caster/levelers and all assembly hardware. Each caster is easily assembled to the cabinet and swivels to allow ease of cabinet movement. The casters are made of black composite material. The levelers are easily adjusted down and secured with furnished locking nuts. These Caster/Leveler kits are designed for moving a cabinet within a facility to its final location.

Casters are for moving the cabinet short distances within the building interior space. They are not intended for transportation or shipping. When transporting the cabinet by carrier, the shipping pallet must extend to the frame of the cabinet and at no time should the caster support any load during the shipping process. Casters must have smooth, flat, hard surfaces to move upon. Floors with cracks, seams, debris, inclines, and declines are to be avoided. Great care must always be observed when moving cabinets to avoid tipping. Casters are not designed for exterior surfaces, asphalt, gravel, and other soft surfaces. Contact nVent HOFFMAN for additional details.

### FEATURES

Caster/Leveler kits are available in either a light duty (900 lbs.) or heavy duty (3000 lbs.) load rating

The kits are comprised of a set of four caster/levelers and all assembly hardware

Each caster is easily assembled to the cabinet and swivels to allow ease of cabinet movement

The casters are made of black composite material

The levelers are easily adjusted down and secured with furnished locking nuts

These Caster/Leveler kits are designed for moving a cabinet within a facility to its final location

## PRODUCT ATTRIBUTES

---

Article Number: 36751

Material: Mild Steel

Finish: Powder Coated

Color: Jet Black

Color Code: RAL 9005

Thickness: 10ga

Load Capacity: 3000lb

Weight: 18.72lb

## WARNING

---

nVent products shall be installed and used only as indicated in nVent's product instruction sheets and training materials. Instruction sheets are available at [www.nvent.com](http://www.nvent.com) and from your nVent customer service representative. Improper installation, misuse, misapplication or other failure to completely follow nVent's instructions and warnings may cause product malfunction, property damage, serious bodily injury and death and/or void your warranty.



Our powerful portfolio of brands:

**CADDY ERICO HOFFMAN ILSCO SCHROFF TRACHTE**