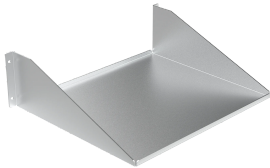


Single-Sided Solid Aluminum Shelf

Data Solutions



The Single-Sided Solid Aluminum Shelf mounts in a cabinet or on a 19-inch open-frame rack, it can also be wall-mounted. Please note it is load rated for 100 lb. (45.4 kg).

FEATURES

The Single-Sided Solid Aluminum Shelf mounts in a cabinet or on a 19-inch open-frame rack, it can also be wall-mounted

Please note it is load rated for 100 lb. (45.4 kg)

SPECIFICATIONS

Table 1/2						
Catalog Number	Article Number	Material	Finish	Thickness	Rack Units	Height
ESHA19	10247	Aluminum	Brushed	0.09in	3U	5.25in

Table 2/2				
Catalog Number	Article Number	Width	Depth	Rack Width
ESHA19	10247	465in	381in	19in

WARNING

nVent products shall be installed and used only as indicated in nVent's product instruction sheets and training materials. Instruction sheets are available at www.nvent.com and from your nVent customer service representative. Improper installation, misuse, misapplication or other failure to completely follow nVent's instructions and warnings may cause product malfunction, property damage, serious bodily injury and death and/or void your warranty.



Our powerful portfolio of brands:

CADDY ERICO HOFFMAN ILSCO SCHROFF TRACHTE