

# IBS advanced ronde geïsoleerde gevlochten geleider, 400 A, 120 mm<sup>2</sup>, 830 mm

## Data Solutions

### CATALOGUSNUMMER

### IBSADV120-830

IBS Advanced Round Insulated Braided Conductor, Halogen Free are the ideal ready-to-install flexible wire replacement solution. Round IBS Advanced connect to the terminals of an electrical device without the need for additional accessories, such as angular connectors, spreaders, ring terminal connectors or extenders. Round IBS Advanced are available in cross sections of 120, 185 and 240 mm<sup>2</sup> (236.82, 365.10, and 473.65 kcmil), lengths from 330 to 1,030 mm (9.06" to 40.55"), and amperages ranging from 420 to 630 A.

Manufactured in an ISO 9001 2015 certified automated facility, round IBS Advanced is formed by weaving high-quality electrolytic copper wire to form a durable low voltage connector with maximum flexibility that allows for more compact power connections to electrical devices. The round IBS Advanced allows users to reduce the total size and weight of the installation, improving both design flexibility and assembly aesthetics.

The round IBS Advanced features pre-punched palms that are ready to connect out of the box. There are no lugs to purchase or install, making connections simpler and faster and eliminating faulty connections due to vibration or fatigue.

The advanced technology insulation is a high-resistance low smoke, halogen-free and flame retardant thermoplastic.

Round IBS Advanced does not generate corrosive gases and produces a relatively low smoke opacity in accordance with IEC 61034-2 and UL 2885. The low smoke characteristic improves the visibility conditions for people to be able to easily locate the emergency exit and also allows rescue workers to better assess an emergency situation. Round IBS Advanced means greater safety for individuals, less damage for your electrical equipment and less environmental impact.



The halogen-free feature enables a reduction in the quantity of toxic smoke. Round IBS Advanced does not contain any halogens, according to IEC 60754-1 and UL 2885, minimizing toxicity and making it the ideal product for use in enclosed spaces such as data centers, rail, and public facilities such as hospitals and schools. This also facilitates the use of round IBS Advanced in specific applications such as submarines, switchboards and other enclosed environments that require a low emissions solution.

In addition to the above features, round IBS Advanced is also compliant with the UL 94-V0 testing standard and Glow wire test 960 °C. The flame retardant portion of the test illustrates the self-extinguish feature. This superior feature of round IBS Advanced is also shown by the Limiting Oxygen Index (LOI) at 30%. In case of fire, round IBS Advanced generates a limited quantity of smoke that is less damaging to your electrical equipment.

## CERTIFICERINGEN



## KENMERKEN

Snelle en gemakkelijke installatie

RoHS-conform

Resistant to vibration, improving reliability and performance

Insulated by high-resistance, halogen free, flame retardant and low smoke material

Tinned copper provides superior corrosion resistance

Improves assembly flexibility and aesthetics

No additional cutting, stripping, crimping and punching needed

Conforms to NF EN 45545 obtaining an HL3 classification for chapters R22 and R23

Small wire diameter provides maximum flexibility

Dramatically smaller and more flexible than comparable cable based on ampacity

Better power density than cable with lower skin effect ratio

Reduces total installation cost

## PRODUCTKENMERKEN

Artikelnummer: 534518

Nominale stroom standaardtoepassing: 400A

Materiaal: Koper; Thermoplastisch elastomeer

Afwerking: Vertind

Diëlektrische sterkte: 20

Ontvlambaarheidsklasse: UL® 94V-0

Halogeenvrije classificatie: UL® 2885; IEC® 60754-1; IEC® 62821-1

Rookarm-classificatie: IEC® 61034-2; ISO 5659-2; UL® 2885

UV-weerstandsspecificatie: UL® 854; UL® 2556

Uitzetting isolatie: 500%

Isolatiedikte: 1.8mm

Werktemperatuur: -50 to 115°C

Max. bedrijfsspanning, UL 67: 600

Max. bedrijfsspanning, IEC/UL 758: 1000; 1500

Max. bedrijfsspanning, EN 50264-3-1: 6000V

Draaddiameter: 0.15mm

Certificeringsdetails: UL® 67; UL® 758

Voldoet aan: IEC® 60439,1; IEC® 60695-2-11 (gloeidraadtest 960 °C); IEC® 61439,1; IEC® 61439,1 Class II

Dwarsprofiel: 120mm<sup>2</sup>

Geleiderbreedte: 24mm

Geleiderdikte: 10mm

Lengte (L): 830mm

A: 12mm

Diameter (Ø): 27mm

Gatgrootte (HS): 10.5mm

Gewicht eenheid: 1.22kg

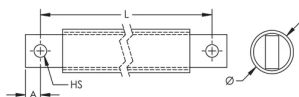
## AANVULLENDE PRODUCTGEGEVENS

$\Delta T$  = Leitertemperatuur – Innentemperatuur des Schaltschranks.

Diese Tabelle zeigt den Temperaturanstieg mit der jeweiligen Stromstärke und dem entsprechenden Querschnitt. Diese Berechnung berücksichtigt nicht die Wärmeabgabe vom Schaltgerät.

Der Abstand zwischen den Stützen darf gemäß IEC 61439-1 nicht mehr als 630 mm (17,8") betragen.

Maximum Ampacity Ratings								
Cross Section (mm <sup>2</sup> /kcmil)	$\Delta T$ 30° C (A)	$\Delta T$ 40° C (A)	$\Delta T$ 45° C (A)	$\Delta T$ 50° C (A)	$\Delta T$ 55° C (A)	$\Delta T$ 60° C (A)	$\Delta T$ 70° C (A)	2 Bar Current Coefficient
120/236.82	325	376	398	420	441	460	497	1.6
185/365.10	407	470	499	526	552	576	622	1.6
240/473.65	488	563	598	630	661	690	745	1.6



## WAARSCHUWING

---

nVent-producten moeten alleen worden geïnstalleerd en gebruikt zoals aangegeven in de instructiebladen en trainingsmateriaal van nVent. Instructiebladen zijn beschikbaar op [www.nvent.com](http://www.nvent.com) en bij uw nVent klantenservicevertegenwoordiger. Onjuiste installatie, misbruik, verkeerde toepassing of ander falen om de instructies en waarschuwingen van nVent volledig te volgen, kan leiden tot productstoringen, schade aan eigendommen, ernstig lichamelijk letsel en de dood en/of uw garantie ongeldig maken.



Ons krachtige merkenportfolio:

**CADDY ERICO HOFFMAN ILSCO SCHROFF TRACHTE**