

FleXbus Conductor, 1,810 mm², 11,000 mm x 50 mm x 50 mm x 85.2 kg

Data Solutions

NÚMERO DE CATÁLOGO

FLEXCOND1810L11



nVent ERIFLEX FleXbus Conductor is ready-to-use from one side with direct connection to busbar or circuit-breaker palm. It is an innovative and patented connection solution between two pieces of electrical equipment (such as a transformer, switchboard or generator). FleXbus Advanced maintains a high level of reliability and creates an easy and customizable connection on-site without additional design study, specific specialized workforce or expensive tools. The FleXbus Conductor is insulated with a low-smoke, halogen-free, flame-retardant (LSHFRR), high-temperature and class II material. FleXbus Conductor is a flexible, copper-plated, aluminum flat braid with insulation available from 2 to 25 meters length and under different cross section for 500A to 6300A applications. It allows for connection from the power supply to switchgear with only one conductor per phase up to 1600kVA and with two conductors per phase up to 3150kVA.

CERTIFICATIONS



CARACTERISTICAS

Flexible insulated copper-plated, aluminum flat braid

Better current/ampacity than cable due to skin effect

Much more flexible than cable

No bending radius to respect

Ready-to-use from one side with direct connection on busbar or circuit breaker palm

Only one conductor per phase from 400kVA (560 A) to 1600kVA (2250 A) and two conductors per phase for 2000kVA (2800 A) to 3150kVA (4435 A)

CARACTERÍSTICAS DO PRODUTO

Número do artigo: 508320

Corte transversal: 1810mm²

Comprimento 1 (L1): 11000mm

Comprimento 2 (L2): 100mm

Conductor Material: Copper Clad Aluminum

Connector Finish: Tinned

Connector Material: Copper

Insulation Elongation: 500% min

Espessura do isolamento: 2.5 – 3.5mm

Rigidez dielétrica: 20kV/mm

Flammability Rating: UL® 94V-0

Halogen Free Rating: UL® 2885; IEC® 60754-1; IEC® 62821-2

Low Smoke Rating: IEC® 61034-2; ISO 5659-2; UL® 2885

Mechanical Resistance Rating: IK09

UV Resistance Rating: UL® 2556; UL® 854

Diâmetro do fio: 0.2mm

Nominal Voltage, IEC: 1000V; 1500V

Max Working Voltage, EN 50264-3-1: 6000V

Temperatura de trabalho: -50 to 115°C

Em conformidade com: IEC® 60695-2-11 (Glow Wire Test 960 °C); IEC® 61439.1; IEC® 61439.1 Class II; IEC® 60364

ΔT 60 K: 2356A

Largura 1 (W1): 108mm

Largura 2 (W2): 110mm

Altura 1 (H1): 39.7mm

Altura 2 (H2): 25mm

Tamanho do orifício (HS): 14mm

Peso unitário: 85.2kg

A: 50mm

B: 50mm

C: 25mm

D: 30mm

2 Bar Current Coefficient, Non-Symmetric: 1.48

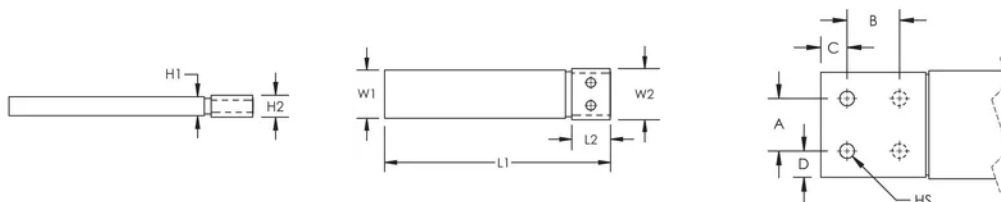
2 Bar Current Coefficient, Symmetric: 2

Installation Standard: AS 3008; BS 7671; CEI 64-8; CSN; DIN VDE 0100; HD 384; IEC® 60364; NBR 5410; NEN 1010; NFC 15-100; NIBT-NIN; NP (2002); ÔNORM; REBT; RGIE-AREI

DETALHES ADICIONAIS DO PRODUTO

Optional extender available for more connection possibilities.

DIAGRAMAS



AVISO

Os produtos nVent devem ser instalados e utilizados apenas conforme indicado nas fichas de instrução do produto e materiais de treinamento da nVent. As fichas de instrução estão disponíveis em www.nVent.com e com nossos representantes de atendimento ao cliente nVent. A instalação inadequada, uso incorreto, aplicação incorreta ou outra falha qualquer em seguir completamente as instruções e avisos da nVent podem levar ao mau funcionamento do produto, danos à propriedade, lesões corporais graves e morte, e/ou anular sua garantia.



O nosso forte portefólio de marcas:

CADDY ERICO HOFFMAN ILSCO SCHROFF TRACHTE