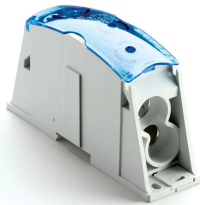


Power Block, Flexibar-2 Cables, 400 A IEC, Aluminum

Data Solutions

NÚMERO DE CATÁLOGO

SBF2C400AL



nVent ERIFLEX Power Blocks are the main DIN mounted output/input devices for connection between primary and secondary switchboard, or main input/output connection for machine or industrial equipment (such as inverter, air conditioning machines, etc.). The high short circuit rated large cross section blocks offer time savings and reliability in every panel configuration. The complete Power Blocks range offers multiple connection types with up to four cables, nVent ERIFLEX Flexibar Advanced, or IBSB Advanced power braids.

CERTIFICATIONS



CARACTERÍSTICAS

Can be connected with round cross section cable or flat connection system like nVent ERIFLEX Flexibar Advanced or IBSB Advanced Insulated Braided Conductor

Compact power block with high short circuit current rating

Tinned copper or aluminum block allows for copper or aluminum conductor direct connections, or using ferrule

Screw retaining cover is hinged and removable

Design allows for visual inspection of conductor and confirmation of connection

Modular snap-together blocks for building multi-pole power blocks

Easily clips onto DIN rail or mounts to panel with screws

Voltage detection and measurement connection

95% fill ratio

RoHS compliant

Conforms to EN 45545 obtaining an HL3 classification for chapter R23 and HL2 classification for chapter R22

Halogen free plastic housing excluding the blue protection cover

CARATERÍSTICAS DO PRODUTO

Número do artigo: 561167

Acabamento: Tinned

Tipo: Flexibar-2 Cables

Typical Application Current Rating, IEC: 400A

Material: Alumínio; Termoplástico

Line Side Max Conductor Size, IEC: 100 mm²

Load Side Max Conductor Size, IEC: (2) 120 mm²

Short Term Withstand Current (I_{cw}) 1s: 28.8kA

Max Current Rating, Insulated Power Braid, IEC: 480A

Max Current Rating, nVent ERIFLEX Flexibar, IEC: 550A

Max Current Rating, UL/CSA: 335A

Peak Short Circuit Current (I_{pk}): 51kA

Rated Conditional Short-Circuit Current (I_{cc}): 24.3kA

Classificação de corrente de curto-circuito (SCCR): 100kA

Max Working Voltage, IEC (U_i): 1000; 1500

Max Working Voltage, UL (V_{in}): 1000

Line Side Number of Connections: 1

Line Side Insulated Power Braid Cross Section: 100mm²

Line Side nVent ERIFLEX Flexibar Size: 2x20x1 - 5x24x1

Load Side Compact Stranded Wire Size: (2) 35 - 120 mm²

Load Side Number of Connections: 2

Load Side Stranded Wire Size - Ferrule: (2) 35 - 120 mm²

Load Side Wire Size: (2) #2 – 250 kcmil

Profundidade (D): 82.2mm

Altura (H): 146.4mm

Largura (W): 41.5mm

Peso unitário: 0.34kg

Certification Details: UL® 1059

Em conformidade com: IEC® 60947-7-1

Classificação do gabinete: IP 20

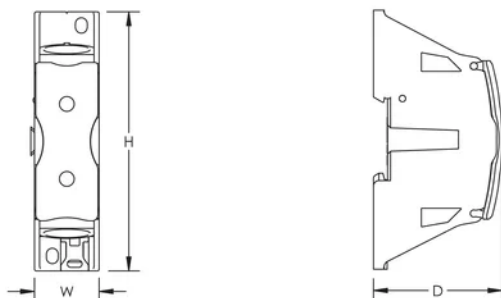
Flammability Rating: UL® 94V-0

DETALHES ADICIONAIS DO PRODUTO

SBF250 is UL® 1953 Listed when used with SB250SPCR. Max Working Voltage for UL 1953 applications is 1250 VAC/DC.

Blue protection cover is less than 7% of the overall product weight.

DIAGRAMAS



AVISO

Os produtos nVent devem ser instalados e utilizados apenas conforme indicado nas fichas de instrução do produto e materiais de treinamento da nVent. As fichas de instrução estão disponíveis em www.nVent.com e com nossos representantes de atendimento ao cliente nVent. A instalação inadequada, uso incorreto, aplicação incorreta ou outra falha qualquer em seguir completamente as instruções e avisos da nVent podem levar ao mau funcionamento do produto, danos à propriedade, lesões corporais graves e morte, e/ou anular sua garantia.



O nosso forte portefólio de marcas:

CADDY ERICO HOFFMAN ILSCO SCHROFF TRACHTE