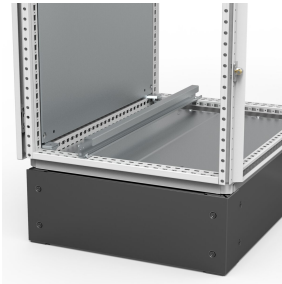




CAB



This adjustable cable bar provides a safe way of securing cables inside the enclosure. External strains are avoided, protecting the installed equipment from damage.

??

Description: Mounted above the bottom plates. Holds standard cable clamps CAC to secure incoming cables. Fully adjustable in depth. When EMC shielded earthing cables are connected to the support bar the Faraday effect will be kept intact for maximum EMI shielding.

Material: 2 mm zinc plated steel.

Pack quantity: 2 bars with mounting accessories.

Mounting requirements: Add CAC clamps depending on diameter of the cable(s).

